

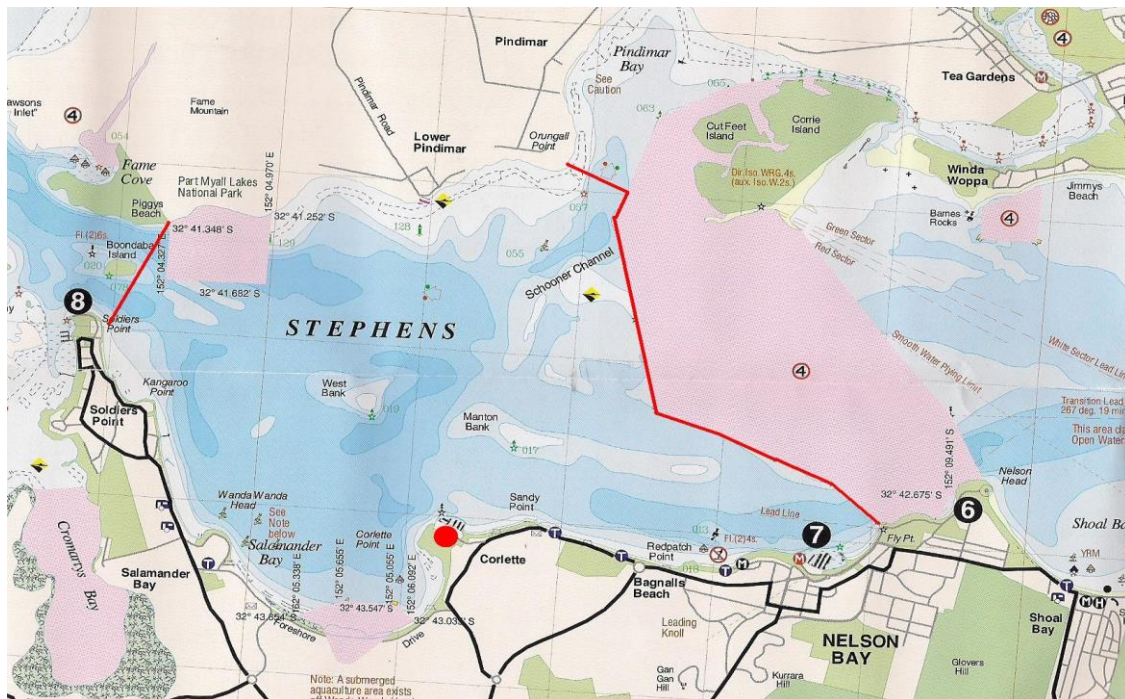
Pollution Incident Response Management Plan for Anchorage Marina

Contents:

- Description and Likelihood of hazards
- List of Contact & Emergency numbers
- List of drop off and pick up (Heli-vac) points
- Contact list and order of operations
- Pre-emptive actions
- Fuel Fire inside Marina Complex
- In the unlikely event of a fuel spill

Description and likelihood of hazards

- Underground storage facility
- Diesel fuel
- Premium Unleaded fuel
- Discharge of Bilge water or other pollutants



Contact numbers for evacuation, notification and response

Plan Activation Persons responsible to activate response plan

Name	Position	24-hour Contact details
Patrick Whetter	Marina Manager	0499 042 370
Andrew Urquhart	Barana Group	0413 308 719
Marina Office		(02) 4981 4975

Notification of Authorities Persons who authorise notification

Person in charge at time as listed above

Pollution Response – Person responsible for management of response

Patrick Whetter	Marina Manager	0499 042 370
Assistant Marina Manager		(02) 4981 4975

Relevant Authorities (in order of industry notification for pollution incidents)

Fire & Rescue (if immediate threat to human health or property)		000
EPA (or the Appropriate Regulatory Authority (ARA))		131 555
Environmental Line Take note of EPA reference number		
RMS		000
The Ministry of Health Local Public Health Line		02 4924 6477
Hunter New England Public Health - All hours		1300 066 055
WorkCover		13 10 50
Nelson Bay Water Police		02 4984 9012
Port Stephens Council		(02) 4980 0255
Fire and Rescue NSW (If situation warranted 000 call you do not need to call again)		1300 729 579
Coastal Patrol		VMR 217/ 02 49813585

Adjoining businesses/tenants/others at risk

The Anchorage Hotel & Spa

(02) 4984 2555

National Parks Contact Centre

1300 072 757

Heli-Vac points in and around Anchorage Marina

- Anchorage Marina Lower end Car park
- Salamander Bay Sporting Fields
- Soldiers Point Sporting Fields
- Soldiers Point Boat Ramp

Contact List and order of Operations

The order in which emergency services listed above are contacted will be the responsibility of the attending supervisor acting on or behalf of the proprietors of Anchorage Marina. Responsibility for control of any emergency will only be passed on at the request of attending authorities.

Pre-emptive actions

As part of our protection and commitment to the environment Anchorage Marina provide all staff with up to date training on emergency response , Risk assessments and infrastructure assessments, Loss monitoring for our underground storage facility , Environmental operations and fuel operations, Routine maintenance by expert fuel maintenance contractors. On a practical level, we carry out daily dock walks constantly monitoring the boats in their berths and any possible pollution, we distribute absorbent cloths for the Bilge if deemed prudent and actively encourage all boater to be vigilant for spills and discharge. As per our berthing agreement all boat are required to isolate their bilge pumps.

Inventory of Pollutants

- Diesel fuel
- Premium unleaded fuel
- Two stroke engine oil

Safety equipment

- Spill kits available on fuel dock and in work vessel
- Marina Fire hose reels throughout the marina
- Fire extinguishers throughout the marina
- Fuel absorbent bunding to close off marina entrance
- Bunding to surround and contain individual vessels

In the unlikely event of a fuel spill it is anticipated the following actions will be undertaken

- Control leakage and slow and or stop leak from source
- Control and or divert leak
- Notify Marina Management and wait for instructional directions
- Notify appropriate authorities
- Avoid disturbance and or contact with leaked materials
- Caution all attending persons, employees or customers of impending danger
- Evacuate persons and or customers from immediate area
- Assess further dangers to adjoining vessels and or marina structure

In the event of polluted water being discharged from a vessel it is anticipated the following actions will be undertaken

- Control and stop discharge from source
- Bund vessel
- Deploy absorbent materials
- Assess further dangers to adjoining vessels and or marina structure
- Dispose of used bunding and absorbent materials in the relevant containers and approved manner

This emergency plan is not restricted from further motions and will be implemented and adhered to as a company policy of Anchorage Marina Port Stephens

Communication with neighbours and the local community

Our customer's safety and that of the general boating public is paramount and every effort will be made to elevate safety requirements for boat hire.

It is hoped through communication with existing operations and authority's additional steps to prevent and or manage dangers will be adopted.

We therefore see this emergency plan growing in strength to offer a greater level of care and safety than ever before.

The Anchorage Marina team have each read the Anchorage Marina Operations Manual and are each First Aid qualified.

Anchorage Marina is a member of the BIA (Boating Industry Association) and MIAA (Marina Industry Association).

The Anchorage Marina is an accredited 'Clean Marina' & qualifies as a premium 'Gold Anchor' Marina. We are proud to be involved in safe boating, continuous education and always act in an environmental friendly manner.

Staff Training at Anchorage Marina

First Aid qualifications and updates

Fire training and hazardous chemical training

Emergency response training, including emergency response drills

Safety at sea training including shipboard safety